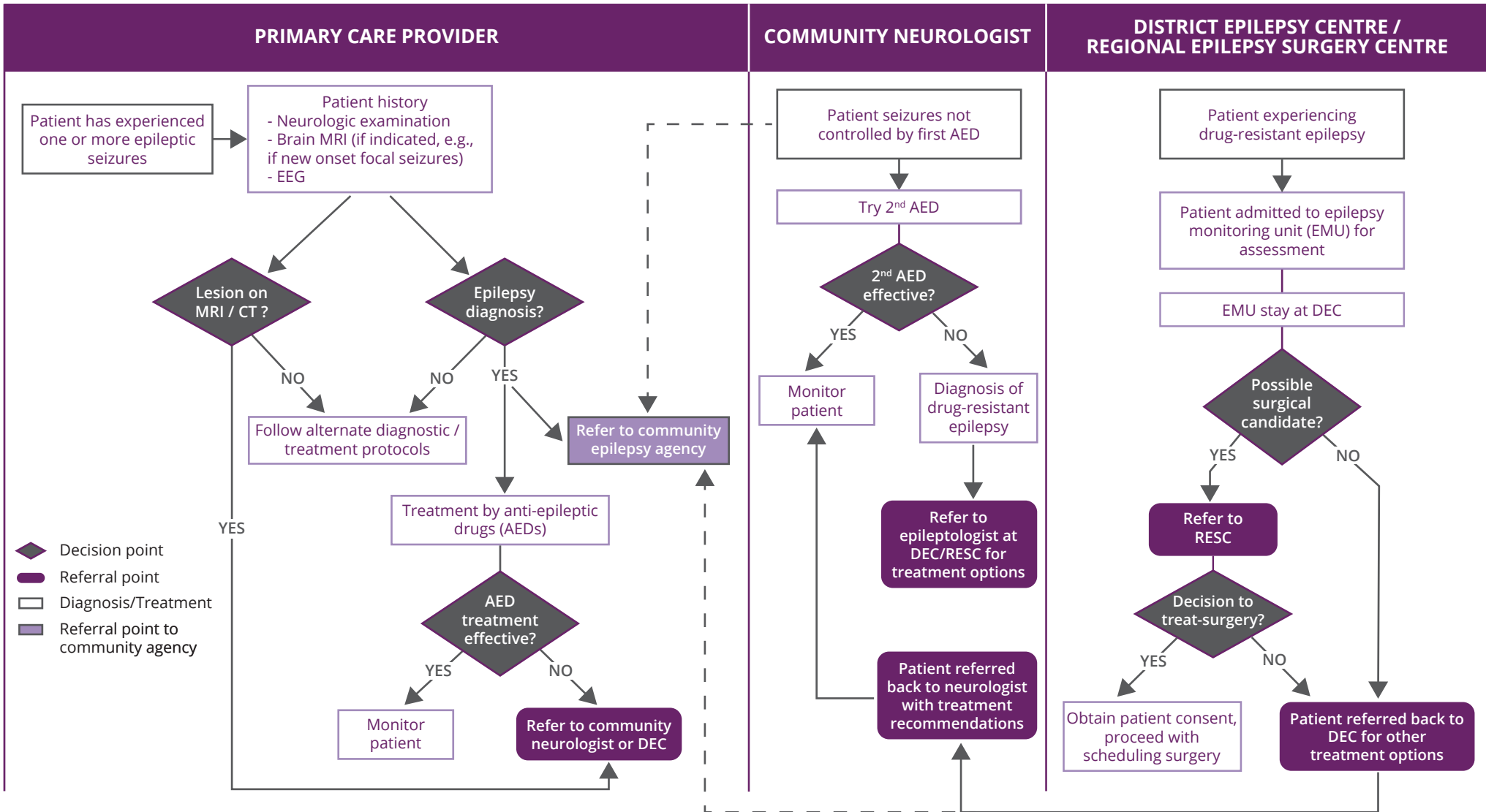


EPILEPSY PATIENT REFERRAL PATHWAY



Local Health Integration Network (LHIN)	PEDIATRIC		ADULT	
	DEC	RESC	DEC	RESC
Erie St. Clair	LHSC	LHSC	LHSC	LHSC
South West	LHSC	LHSC	LHSC	LHSC
Waterloo Wellington	HHS	SickKids	LHSC/HHS	LHSC
HNHB	HHS	SickKids	HHS	LHSC
Central West	SickKids	SickKids	UHN	UHN
Mississauga Halton	SickKids	SickKids	UHN	UHN
Toronto Central	SickKids	SickKids	UHN	UHN

Local Health Integration Network (LHIN)	PEDIATRIC		ADULT	
	DEC	RESC	DEC	RESC
Central	SickKids	SickKids	UHN	UHN
Central East	SickKids	SickKids	UHN	UHN
South East	KGH	SickKids	KGH	UHN
Champlain	CHEO	SickKids	TOH	UHN
North Simcoe Muskoka	SickKids	SickKids	UHN	UHN
North East	CHEO	SickKids	LHSC	LHSC
North West	LHSC	LHSC	LHSC	LHSC

Note: This referral pathway has been endorsed by the EITF and Provincial Neurosurgery Advisory Committee (PNAC). These recommendations are not intended to supersede existing referral relationships. Referring practitioners are encouraged to check with DECs for average wait times when making referrals. Where possible, it is suggested to offer patients options to enhance their timely access to care.